

Middleton Public Library

Building Feasibility Study
Stacking and Blocking summary
Middleton, Wisconsin
July 1, 2015

DESIGN TEAM:

Jim Gersich, AIA

Tina Gordon, NCIDQ

Ray White, AIA

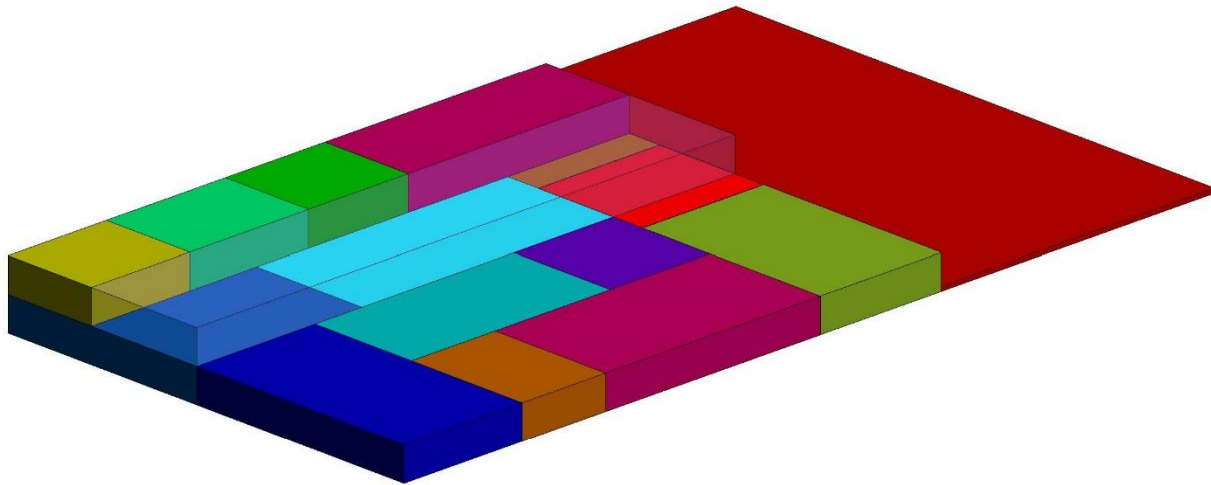
James Worker, Associate AIA

Blocking and Stacking Workshop

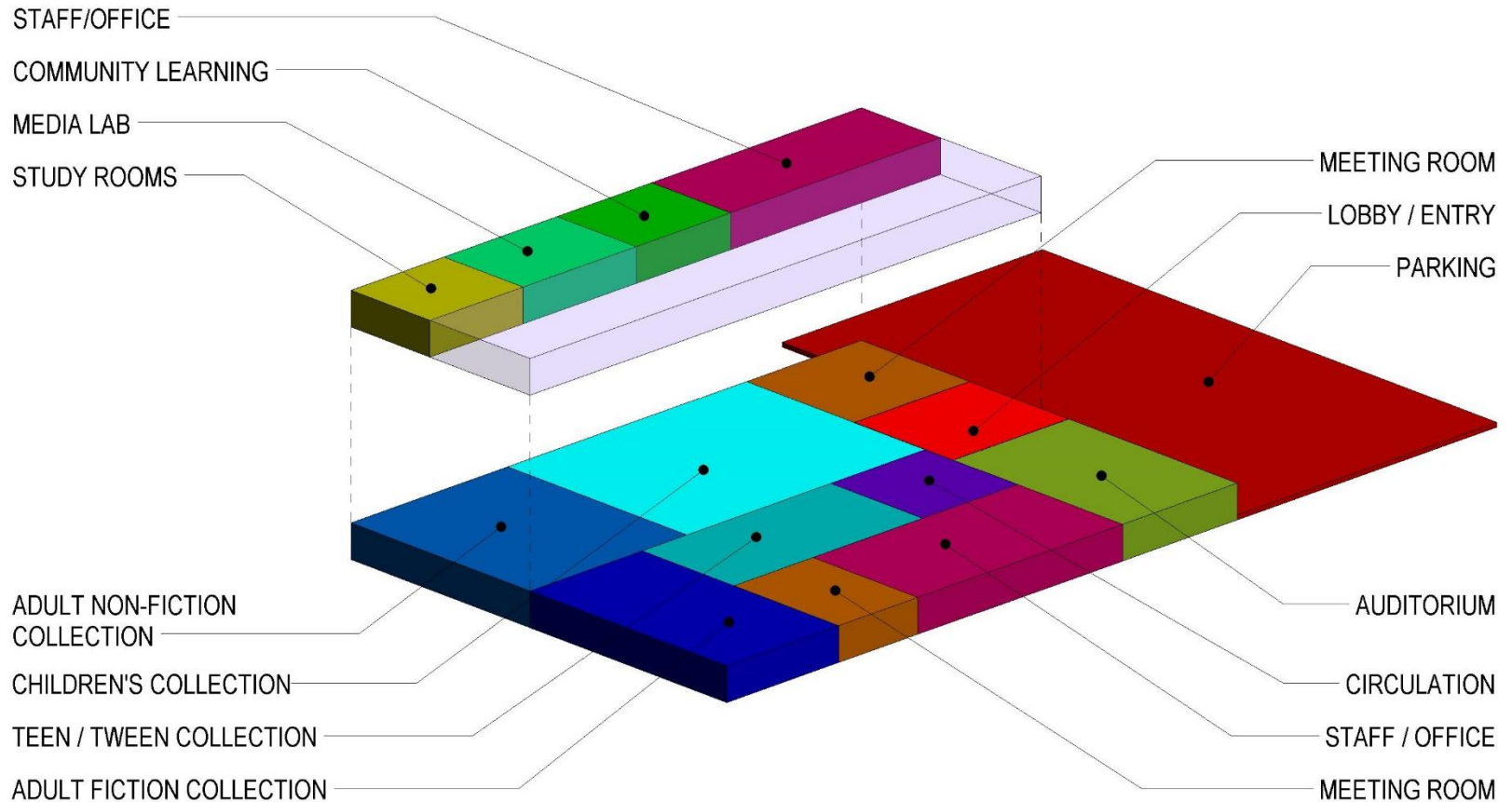


Option A - Blocking and Stacking Diagram

- LOFT W/ STUDY ROOMS, MEDIA LAB, COMMUNITY LEARNING
- AFTER HOUR ACCESS TO MEETING ROOM, AUDITORIUM
- STORYTIME ROOM ACCESSIBLE FROM LOBBY
- CIRCULATION NEAR LOBBY



Option A - Blocking and Stacking Diagram

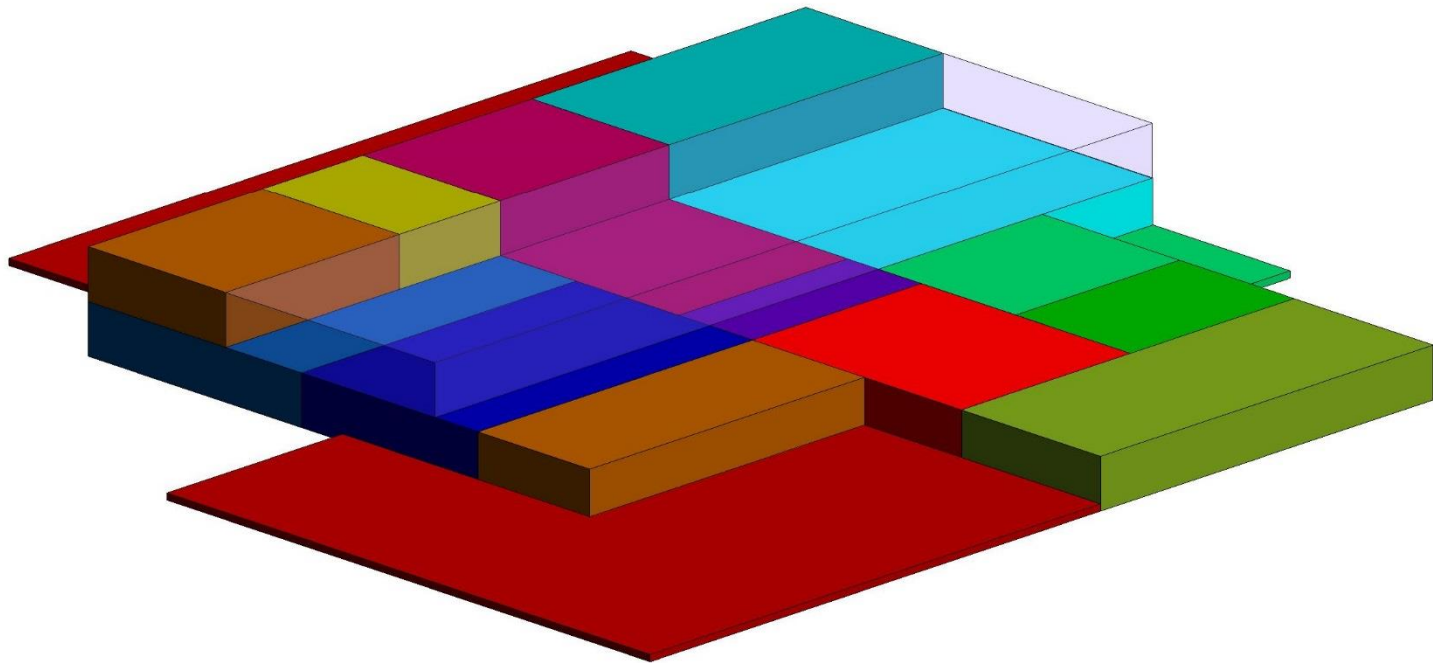


Option B – Blocking and Stacking Workshop

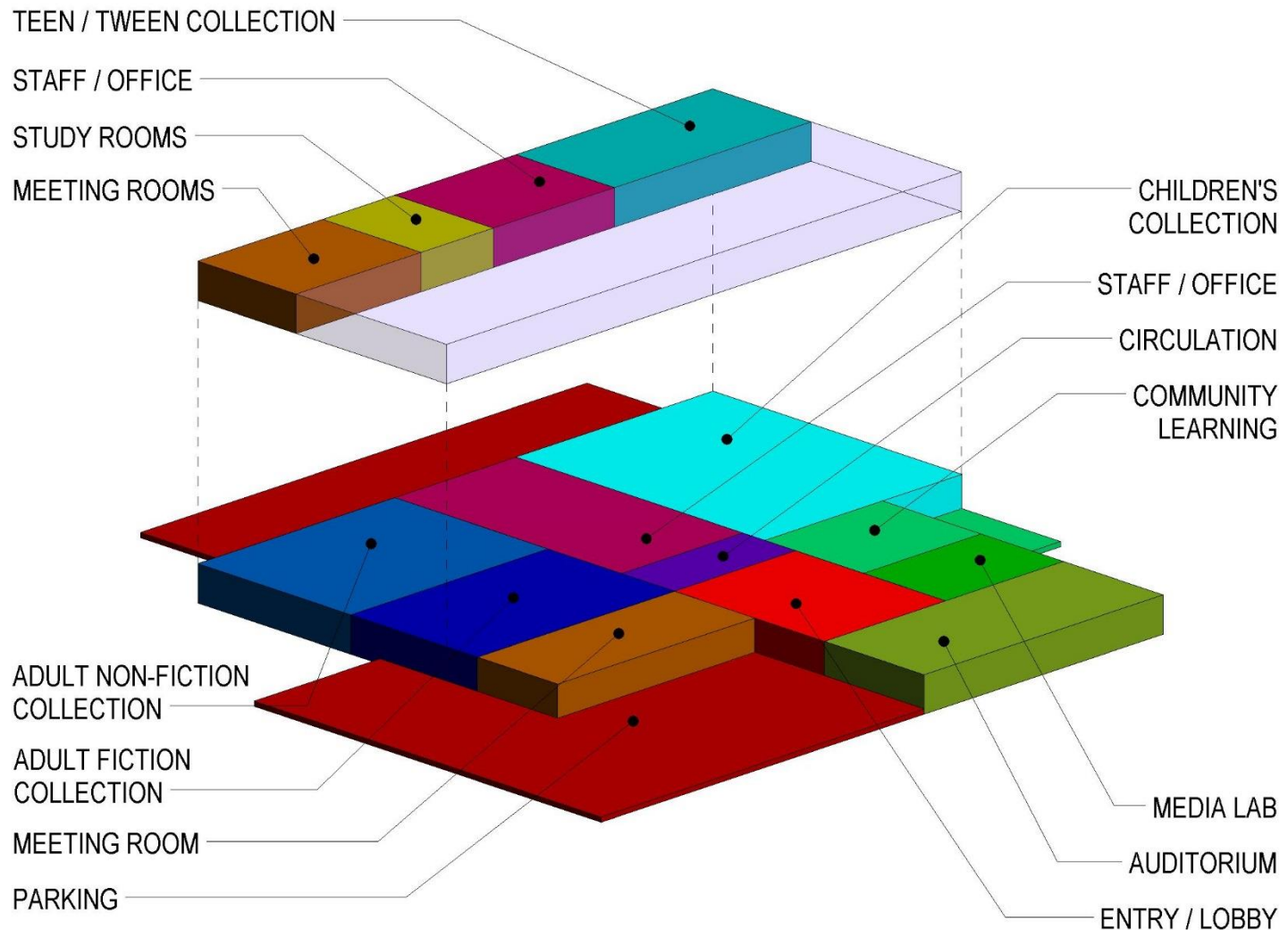


Option B - Blocking and Stacking Diagram

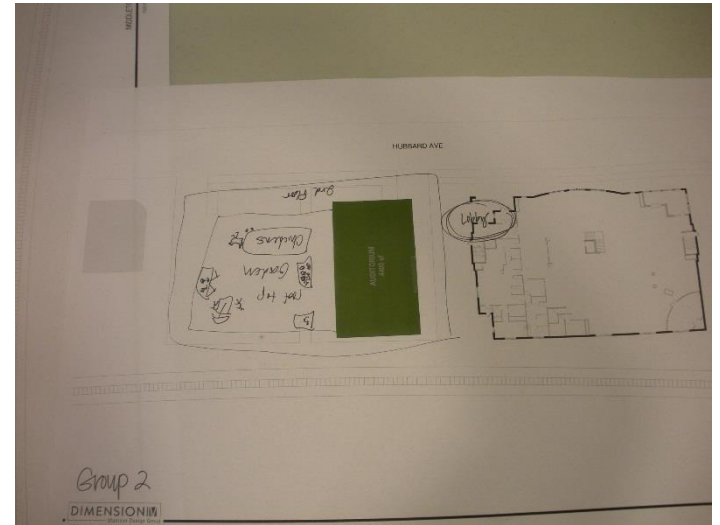
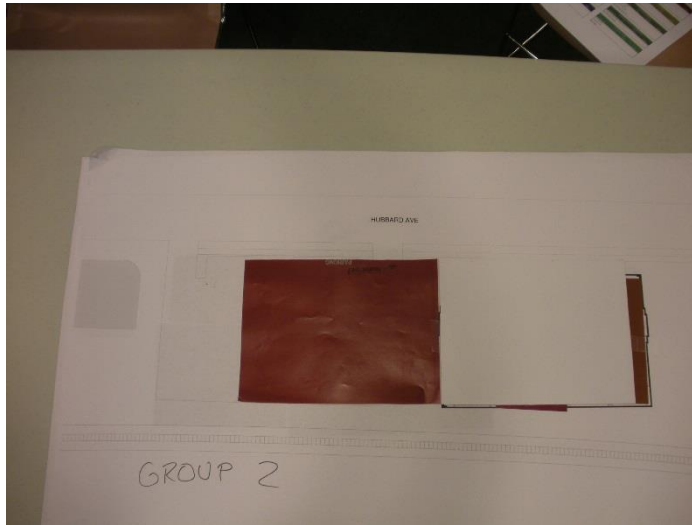
- LOFT W/ TEEN LIBRARY, STUDY ROOMS, CONFERENCE ROOM
- SPLIT PARKING, OPPORTUNITY FOR PARKING STRUCTURE/MULTI LEVEL ENTRY
- AFTER HOUR ACCESS TO MEETING ROOM, AUDITORIUM AND COMMUNITY LEARNING
- STAFF AREA CENTRALLY LOCATED



Option B - Blocking and Stacking Diagram

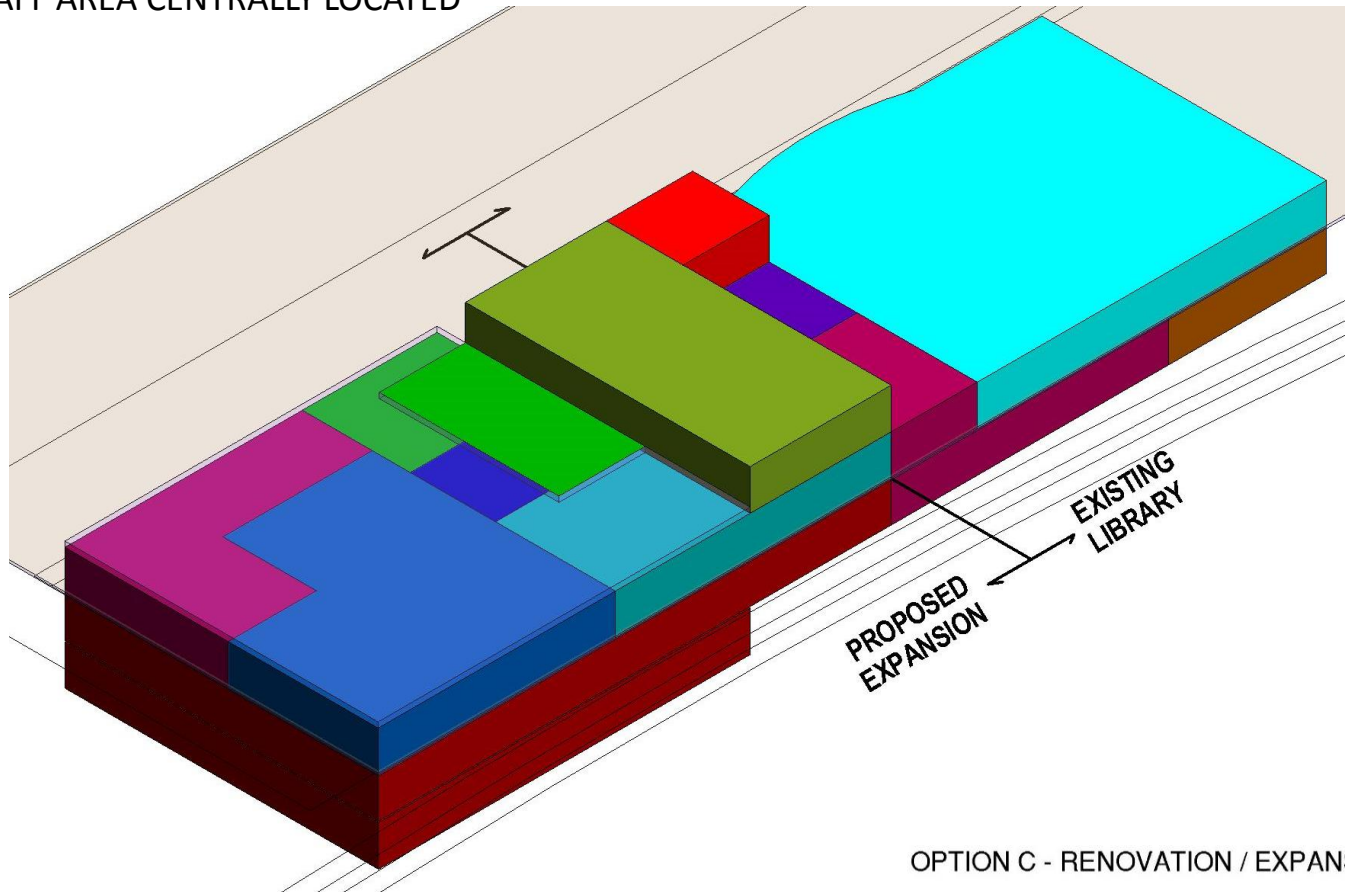


Option C – Blocking and Stacking Workshop



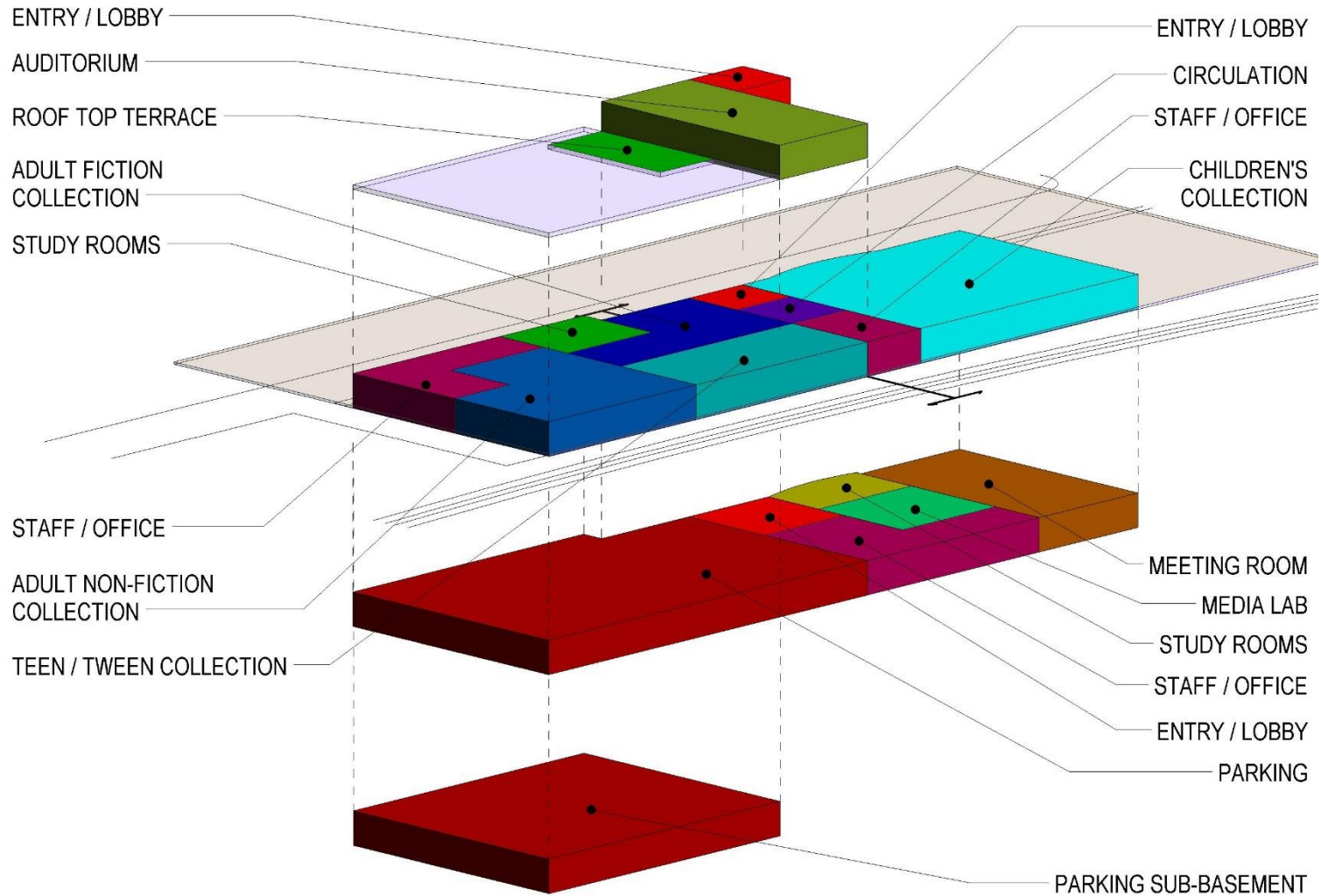
Option C - Blocking and Stacking Diagram

- AUDITORIUM ON TOP FLOOR, ROOFTOP TERRACE
- TWO LEVELS OF UNDERGROUND PARKING
- COLLECTIONS ALL ON FIRST FLOOR
- AFTER HOUR ACCESS TO AUDITORIUM
- STAFF AREA CENTRALLY LOCATED

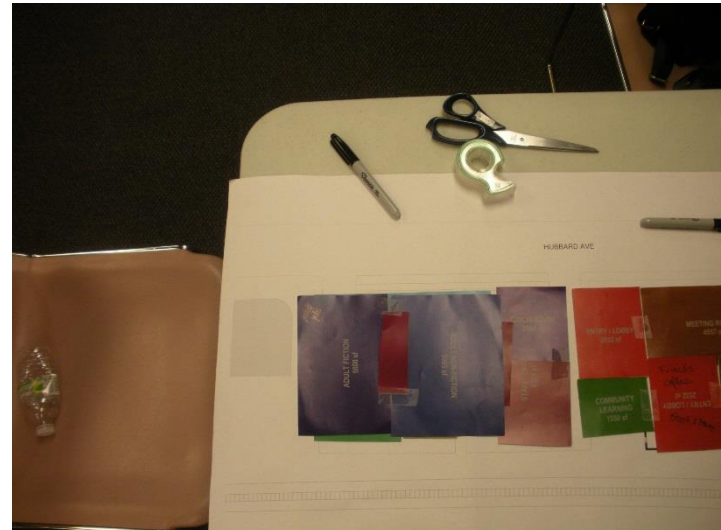
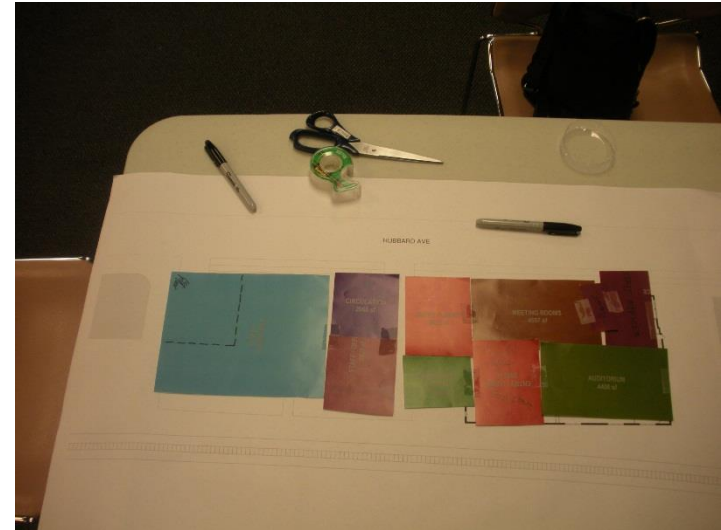
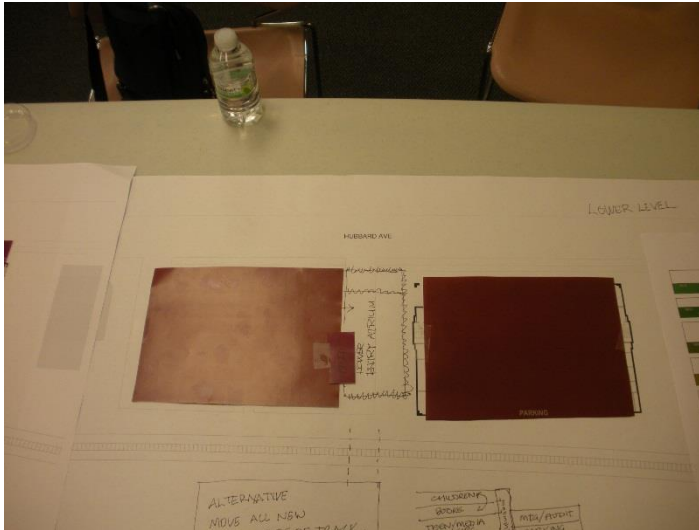


OPTION C - RENOVATION / EXPANSION

Option C - Blocking and Stacking Diagram

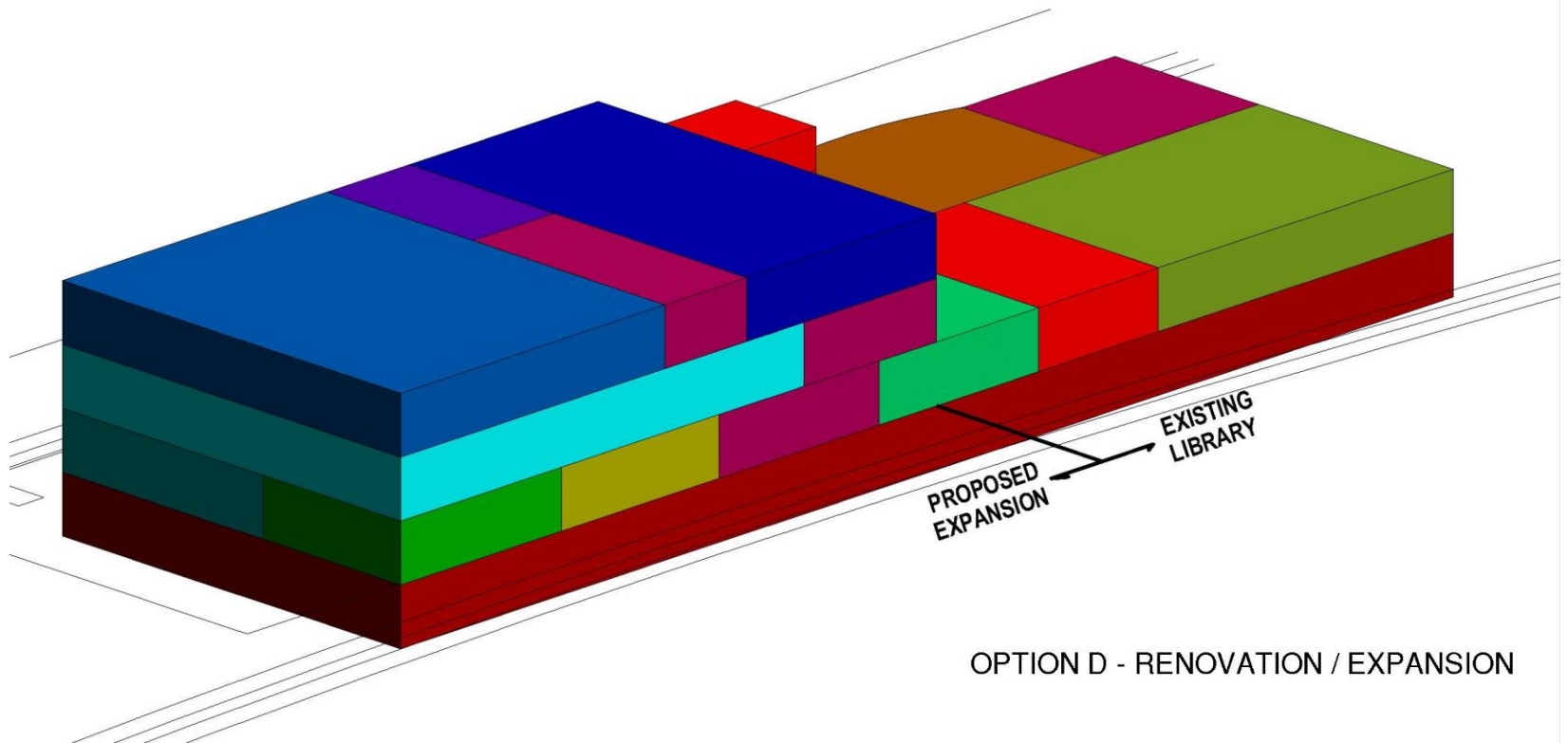


Option D – Blocking and Stacking Workshop



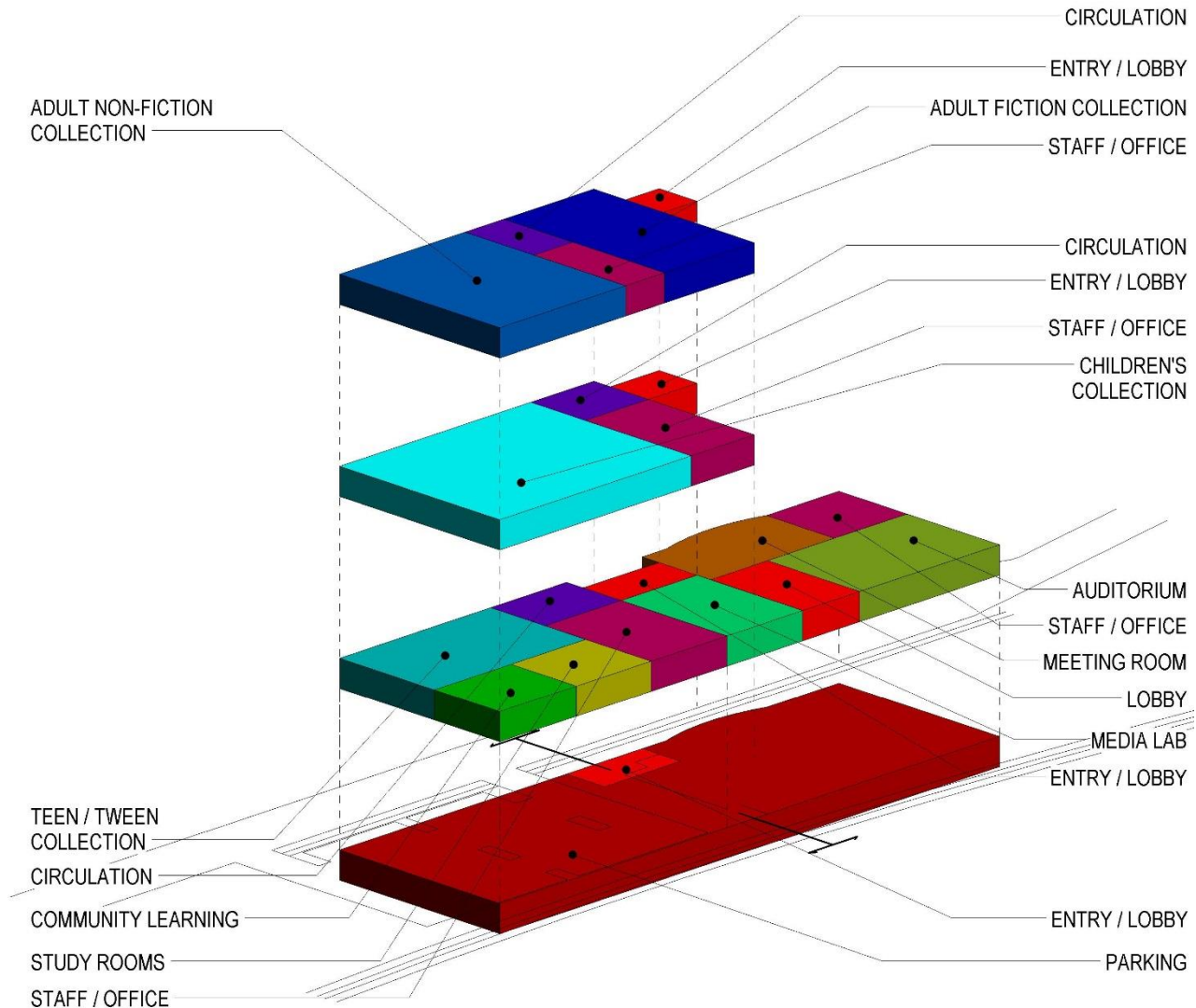
Option D - Blocking and Stacking Diagram

- GLASS ATRIUM BETWEEN EXISTING BUILDING AND PROPOSED EXPANSION
- AFTER HOUR ACCESS TO MEETING ROOM, AUDITORIUM AND COMMUNITY LEARNING
- TEENS LIBRARY, STUDY ROOMS, AND MEDIA LAB ON FIRST FLOOR ADJACENT TO CIRCULATION
- PARKING IN BASEMENT – NO PROGRAM SPACE BELOW GRADE

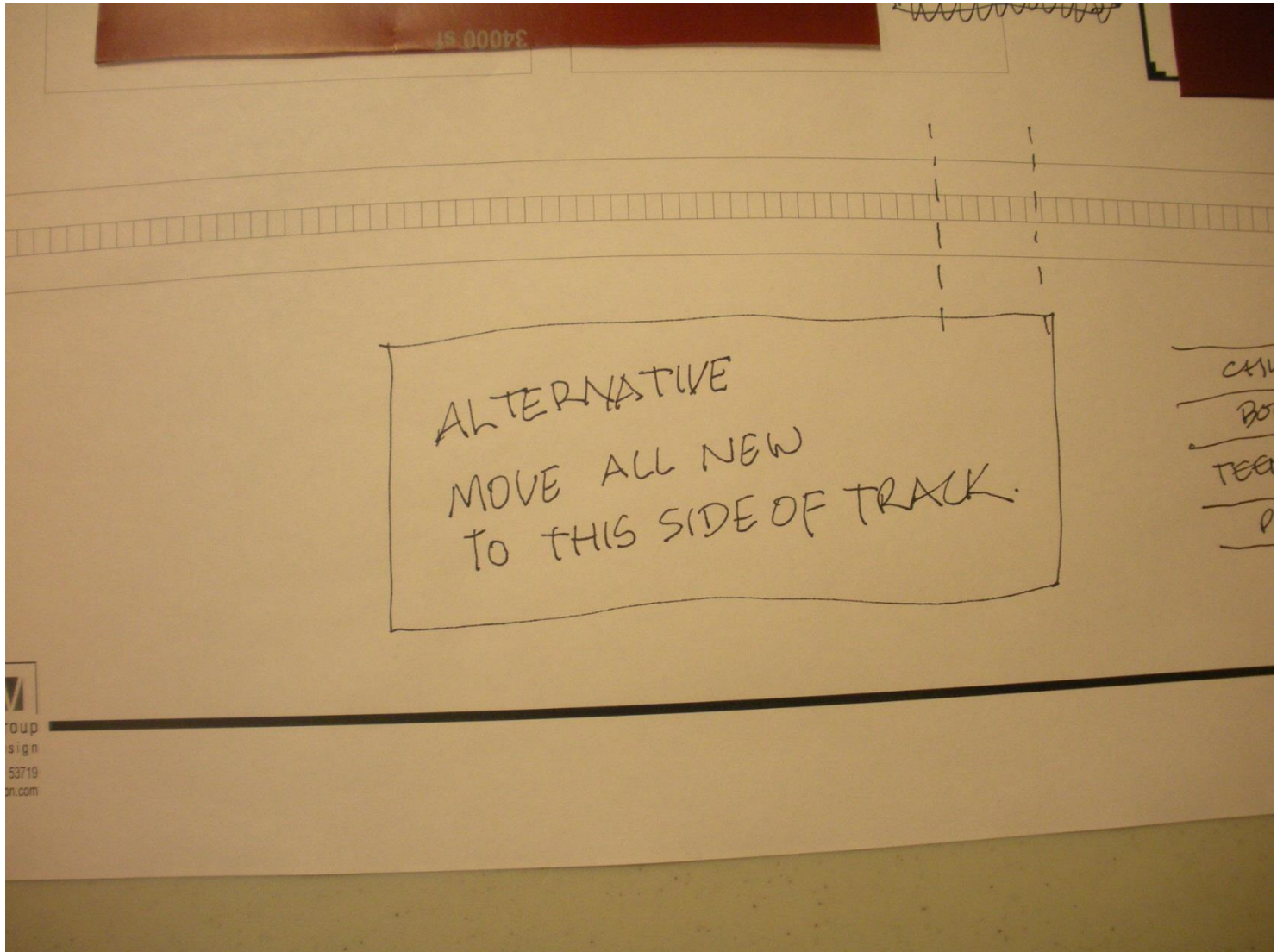


OPTION D - RENOVATION / EXPANSION

Option D - Blocking and Stacking Diagram

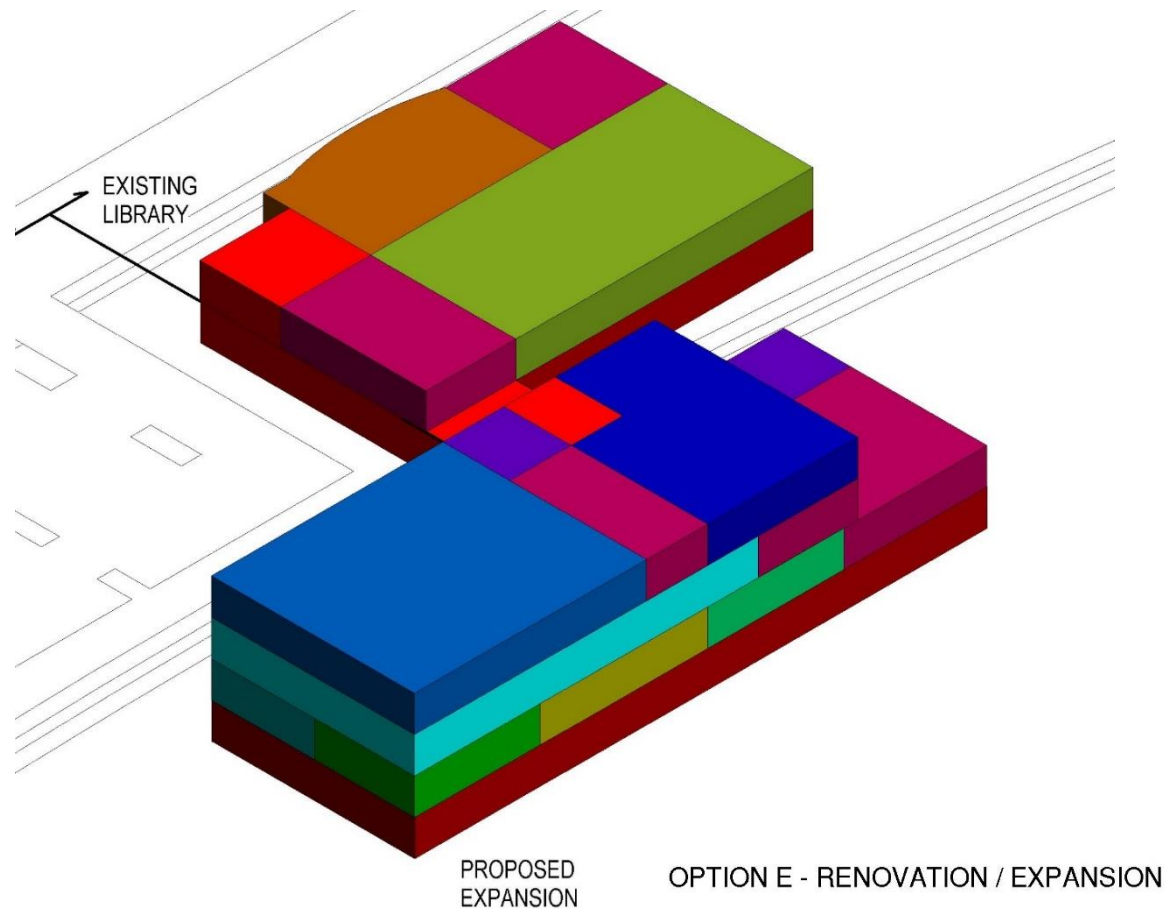


Option E – Blocking and Stacking Workshop

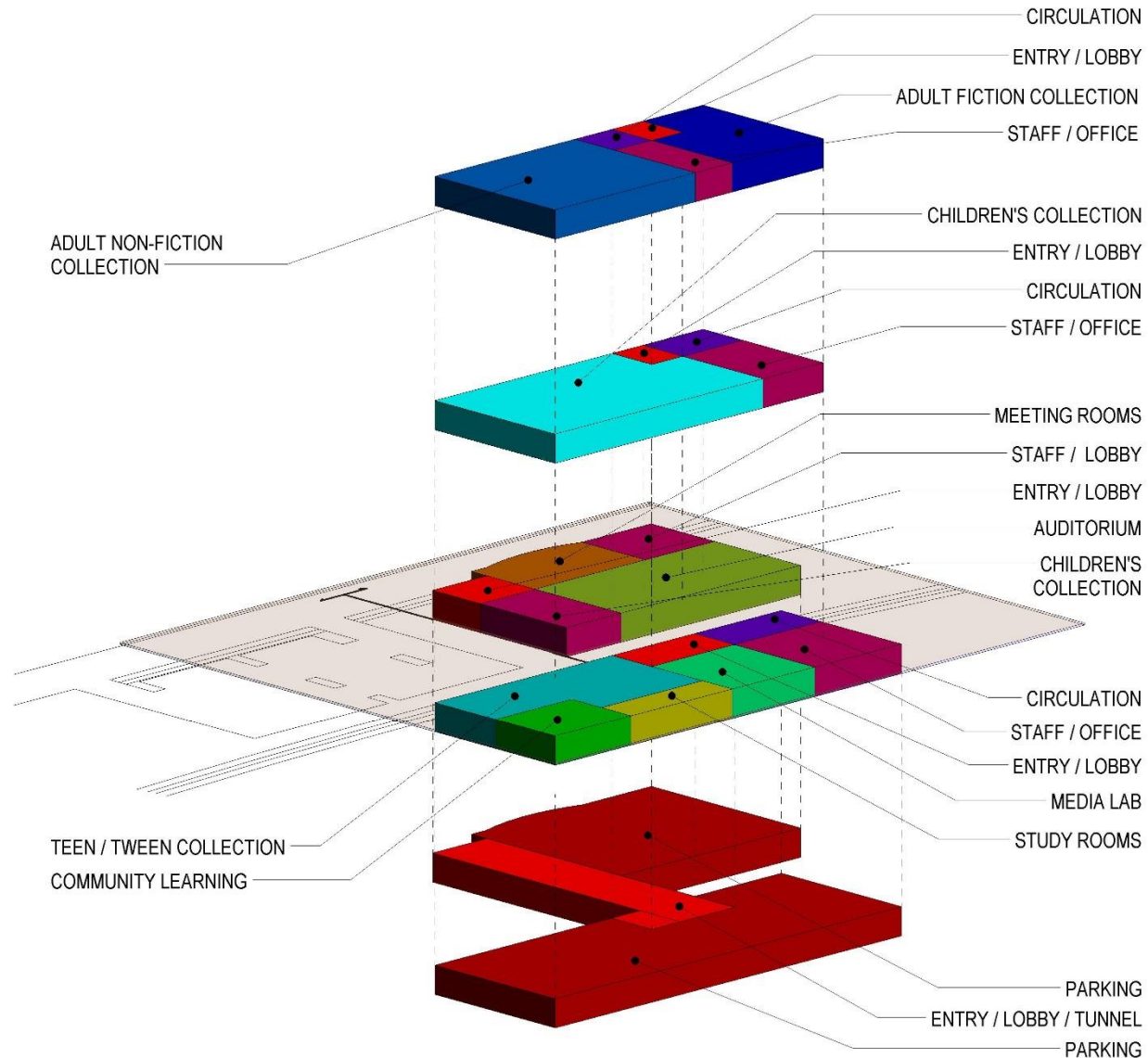


Option E - Blocking and Stacking Diagram

- SIMILAR TO OPTION D, BUT NEW STRUCTURE IS LOCATED ON TERRACE AVE
- CONNECTED TO EXISTING BUILDING BY TUNNEL UNDER RAILROAD TRACKS



Option E - Blocking and Stacking Diagram



Key points from Blocking/Stacking Workshop

- Underground parking
- Rooftop garden
- Outdoor programming
- Staff located with collections
- Something that activates the space
- Study Rooms
- Auditorium/Meeting Rooms locked separately
- Retail space components
- Residential components
- Worried about leaving downtown
- Showcase Media Lab/Learning Commons
- Expand people's idea of what library could be
- Reuse existing building
- Some community members feel renovations feel fairly recent
- Keep existing library up and running while addition/remodel happen
- Selling concept as building for future (flexibility!)
- Visible sightlines thru collections
- Accessible for all mobility's
- Indoor and outdoor programming space
- Special place-wow factor
- Many ways to get to a solution-lots of different perspectives

THANK YOU!

