

# Monthly Road Map Report March, 2026

[midlibrary.org/board](http://midlibrary.org/board)

Prepared by Director Sansing



## Month in Review & Highlights:



The library hosted **67 programs** in March 2026 with a total attendance of **2,153 people!**

By Age Group:

- **Children 0-5**  
**27 programs, 803 attendees**  
Tiny Tots Storytime (multiple sessions, 40-64), Sensory Stations: Luck and Rainbows (54 + 50)
- **Children 6-11**  
**12 programs, 631 attendees**  
Full STEAM Ahead Scavenger Hunt (466), MAD Science (250), STEAM Week: All Ages Lego Day (60)
- **Teens 12-18**  
**7 programs, 67 attendees**  
ACT Diagnostic Test (32 attendees), ongoing D&D campaigns, Casino Night



- **Adults**

**17 programs, 280 attendees**

Hamnet Movie Screening (46), WI Film Fest Sneak Peek (44), Virtual Author Talk w/Michael Perry (46)

- **All Ages**

**4 programs, 372 attendees**



STEAM Week drew strong participation across age groups. The month's standout events included the Full STEAM Ahead Scavenger Hunt (466 attendees) and MAD Science (250 attendees), showcasing the popularity of hands-on science and technology programming. Children ages 0-5 remained the most served demographic with 27 programs and 803 attendees, while STEAM Week events like Casino Nights, Sphero Mazes, Egg Drop, and Tech Takedown engaged tweens and teens.



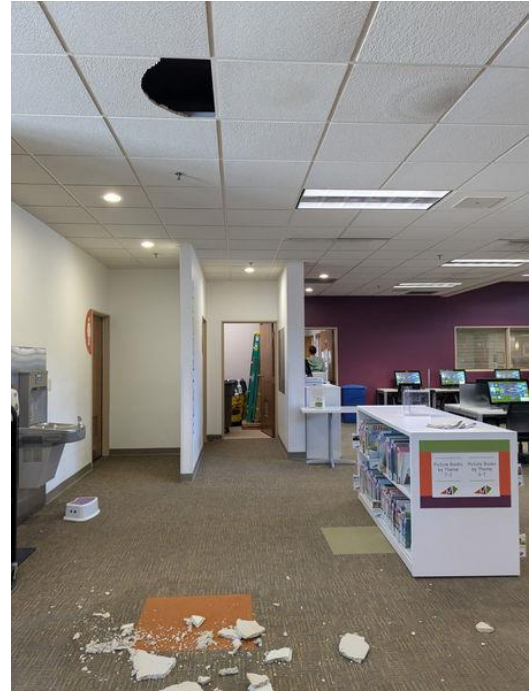
The library continued its consistent outreach with 12 programs at preschools and community locations serving 181 people, hosted an author visit, adults continue to show up for movies,

and programming themes transitioned from winter to spring with rainbows, and luck!



The library worked with the group, Expanding Horizons, to host the exhibit, [Flyover Country](#), which shared the history of LGBTQ+ activism in the United States and firsts in the Midwest.

Inclément spring weather impacted the HVAC and rooftop snow melt, causing a ceiling leak and collapse in two spots. Total materials damages were just under the insurance deductible of \$1000.



### Looking Ahead:

Know someone who is interested in getting more involved with their community and they love the library? Join the Friends of the Library at their annual [Open House on May 13<sup>th</sup> 6pm!](#)

The bookmobile returns for the 2026 season on Saturday April 25<sup>th</sup>! [Migration month in April!](#)

THURSDAY, APRIL 23 6PM

## THE CIVIC HEALTH OF WISCONSIN

WITH MARY BETH COLLINS  
EXECUTIVE DIRECTOR, UW-MADISON CENTER FOR COMMUNITY AND NONPROFIT STUDIES

Join Mary Beth Collins to learn about "civic health," why it matters, and how we can all be a part of building a more civically healthy Wisconsin and world.

BADGER TALKS

Register at [midlibrary.org/events](https://midlibrary.org/events)

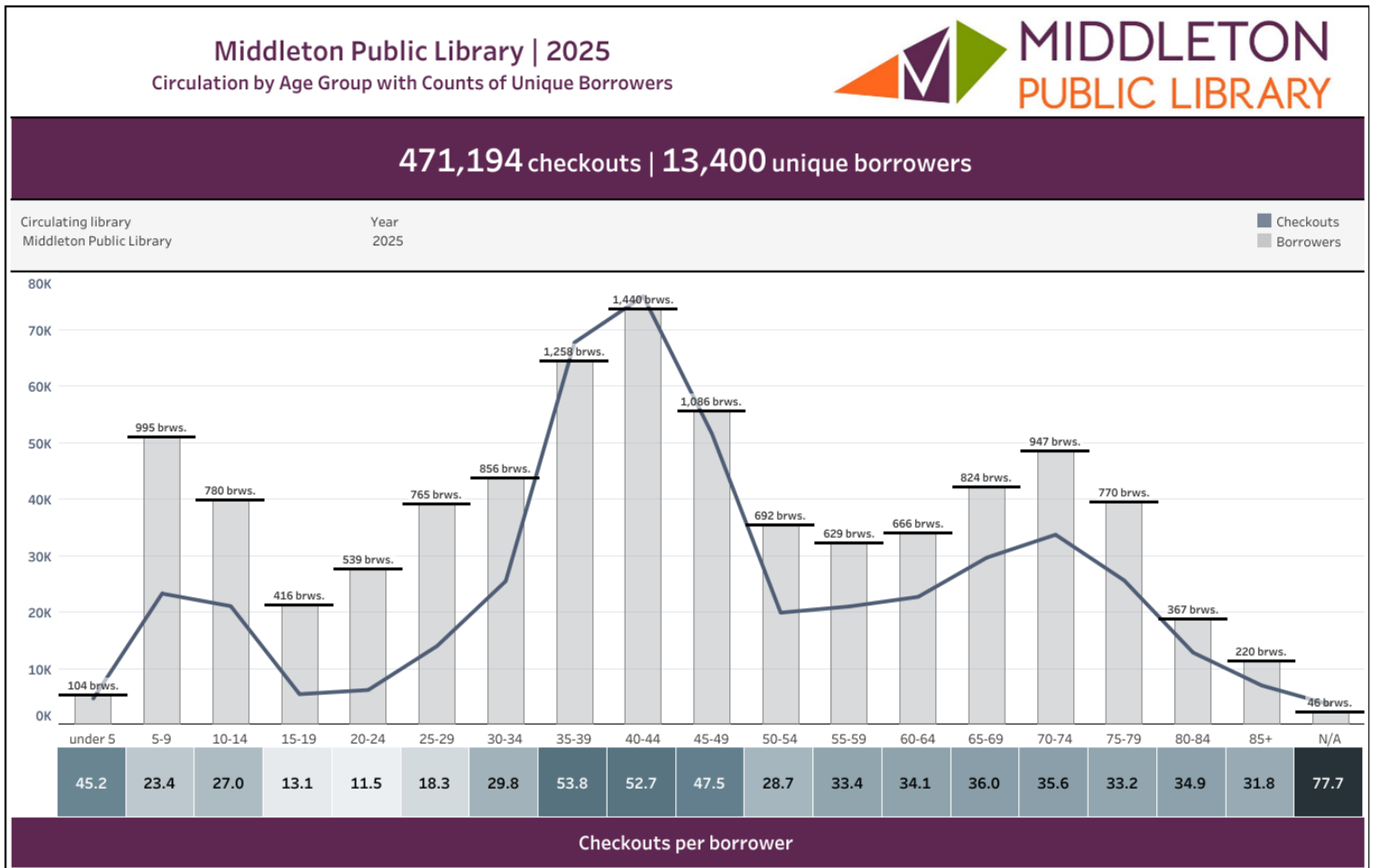
## EARTH DAY EVERY DAY

### Sustainability Fair & Electric Vehicle Show

Saturday, April 25, 10-2pm  
Middleton Community Church  
(645 Schewe Road, Middleton)

Enjoy live music, exhibitors, speakers, owner-shown electric cars, and activities for kids at this family-friendly, and free event! Food available to purchase from local food trucks and make sure to stop by Middleton Public Library's bookmobile! Free books for kids, *while supplies last.*

## By the Numbers:



Data collected and maintained by the South Central Library System annually. The data covers 471,194 total checkouts from 13,400 unique borrowers in 2025. Average checkouts/borrower is 35.2 and the peak age group is 40-44. A few patterns stand out:

**Where the borrowers are:** The 35–44 age range dominates in both headcount and raw checkouts, with 40–44 being the single largest group (1,440 borrowers). This likely reflects the peak family-formation years — parents checking out materials for themselves and their children.

**Engagement intensity vs. volume:** The most interesting metric is checkouts per borrower. The 35–44 cohort checks out ~53 items per year — extremely heavy use. But the N/A category (likely staff cards or institutional accounts) tops the chart at 77.7, suggesting bulk institutional use. Under-5s also skew high at 45.2, reflecting parents checking out large volumes of picture books.

**Seniors are underrepresented but engaged:** The 65+ groups have fewer borrowers (as expected from population share), but their per-borrower rates (33–36) are healthy and consistent, suggesting a loyal core of heavy readers.

### Patron Spotlight:

*“Dear Middleton Public Library, I love visiting your space because it is superb! Your impact is what matters, and in this case, their impact is massive. I go to your amazing library often. I enjoy sitting down, reading the variety of books, and most of all, I love how kind the workers are. This library doesn’t only have books, but also CDs, games, clubs, movies, and so much more! Sometimes I imagine living there because the inside and outside are extremely beautiful! So many people have contributed to what this Library is now, it is impressive. Thank you!” - Madalyn, 6th grade student, St. James School*

*“Hello, Yesterday, Megan who was staffing the downstairs desk at about 12:30 PM helped me with a complex computer issue. I was encountering problems printing a document from my laptop on the library printer. I had done it easily in the past but now Google was putting up barriers. Megan quickly grasped the situation. She used my iPhone and my MacBook to coordinate with the library printer. Soon the printed document was in my hands. Thank you, Megan.” - Sincerely, Ann*

### Strategic Focus:

[2026-2030 Strategic Plan](#) is complete and posted! Next steps include: 1. continuing to create metrics and communication strategies for outcomes and impacts, 2. aligning individual and department goals, and 3. incorporating staff input and patron feedback.

### In the News:

*“Good morning Jocelyne, Kimberly, and Scott, and thank you again for delivering the highly valuable PLA webinar on ICE in public libraries and PLA 2026 program on the same! We are so grateful and hope you have had nothing but positive experiences with these sessions.*

*In case you have not seen it, I wanted to let you all know that the American Libraries article about this went live on March 26;*

*see <https://americanlibrariesmagazine.org/2026/03/26/encountering-ice/>*

*In addition, we were contacted this week with a request to translate the AL article into Swedish and German, and publish it via the Swedish Library Association’s magazine and website. PLA staff have agreed to this request.*

*I hope you are pleased to hear about the ongoing reach and impact of your insights and ideas, but please let me know if you have any questions or concerns about any of the*

*above! Many, many thanks again and very best wishes from PLA!" - Angela Maycock, MSLIS, CAE (she/her)Deputy Director, Programs Public Library Association, a division of the American Library Association*

Check out the [PLA presentation summary on page 6](#).

Director Sansing will present on this topic again at the WLA WAPL conference on April 29<sup>th</sup> in Elkhart Lake, WI.

Thanks to our partners at [Channel 3000 for a great story](#) ahead of National Library Week!


### Staff Spotlight:

Katharine Clark represented the [Middleton Public Library and the State of Wisconsin at the National Library Legislative Day](#) with several others from WI.

Seven staff from Middleton had the opportunity to attend the National Public Library Association Conference in Minneapolis, MN. Director Sansing presented on a panel. Here is a summary of their reports:



Session summary and highlights:



**Opening Keynote — Bryan Stevenson** (*mentioned by 4 attendees*) Stevenson's central message: get proximate to the people you serve, change the narratives that fuel injustice, stay hopeful, and do uncomfortable and inconvenient things. Widely described as the standout moment of the conference.

**From Anxiety to Action: Building Stronger Communities and Libraries** (*mentioned by 3 attendees*) Libraries can directly combat the loneliness and isolation epidemic — linked by the U.S. Surgeon General to the same health risks as chronic disease. Uses the Sustainable Libraries Initiative and National Climate Action Strategy Guide as frameworks. Described by one attendee as "Bowling Alone for a new era."

**How Gen Z Use (and Don't Use) Public Libraries** (*mentioned by 2 attendees*) Based on a Portland State University survey of 13–27 year olds. Key finding: Gen Z feels lonely, and readership is actually going up. The question for libraries is how to meet that need for connection.

**Highway to Hell: The Good Intentions Journey** (*mentioned by 2 attendees*) A panel of library managers sharing HR mistakes and hard lessons. Core takeaway: failing to address problems directly and quickly turns small issues into major obstacles.

Noteworthy additional sessions:

**3D Printing for Accessibility** Real-world accessibility aids that can be easily 3D printed, with links to free design files and inspiration for customizing future aids.

**Trust & Verify: Information Accuracy in the Age of SEO, AI & Algorithms** Practical, hands-on advice for recognizing different kinds of misinformation and verifying sources relatively quickly.

**Speak Up! Using Middle Grade Books to Build Allyship Muscles** Good Books Young Troublemakers Book Club as a model — free discussion guides available online. Suggested language for navigating disagreement in programming spaces: "I can't tell you what to believe, but in this space everyone is welcome."


**A Queer and Present Danger: Supporting LGBTQ+ Staff** Practical safety strategy: establish a staff code word that lets employees either remove themselves from an uncomfortable situation or signal to a manager that they're okay while they wrap up.

**Serious Leaders Play** Playful people tend to see challenges as puzzles and experience lower stress. Made a case for normalizing playfulness in workplace culture, including a discussion of fidget toys.

**Creating a Spark — Reentry Facility Library Program** Tom Auger of DeKalb County (GA) shared his work bringing digital literacy programming to a reentry facility. Highlighted the real challenges of extending library services to people outside traditional library settings.

**Middle Managers** Tips for navigating workplace conflict and leading with empathy — particularly relevant for middle management roles navigating between staff and leadership.

**Dr. Ruha Benjamin — Closing/Keynote on AI & Technology** Technology is not neutral. Explored the question "who owns the future?" and connected slow librarianship and earth-friendly data centers to libraries' broader values.



**Legal Issues in Public Libraries Forum** A current review of legal challenges facing libraries nationally. Notable: courts in the 5th Circuit (Louisiana, Mississippi, Texas) are making book challenges easier to win. The speaker's blunt advice — "Don't take a job there."

**Library Programming for Older Adults** By 2040, 78.3 million Americans will be over 65 — more than double the number in 2000. Libraries are well positioned to combat isolation and support lifelong learning for this rapidly growing population.

**Trustees as Advocates** Trustees are uniquely positioned as community leaders to advocate for their libraries. Notably, public library trustees have not been academically studied since 1949 — the University of Missouri Extension's Library Trustee Project aims to establish a national baseline. Many directors and trustees are navigating politically motivated board appointments and shifting power dynamics.

## Resources

- [Making Space for Teens](#)
- [Teens Lead Internship info](#)
- [Good Books Young Troublemakers](#)
- [ALA: Slow Librarianship](#)
- [U.S. Surgeon General: "Our Epidemic of Loneliness" \(2023, PDF\)](#)
- [Engaged Neighbor Program — U of Missouri Extension](#)
- [National Good Neighbor Day](#)
- [Aging Together Landscape Report \(PDF\)](#)
- [PDX Scholar research paper](#)
- Survey vendors: Gallup, Energage, Denison
- [Sustainable Libraries Initiative](#)

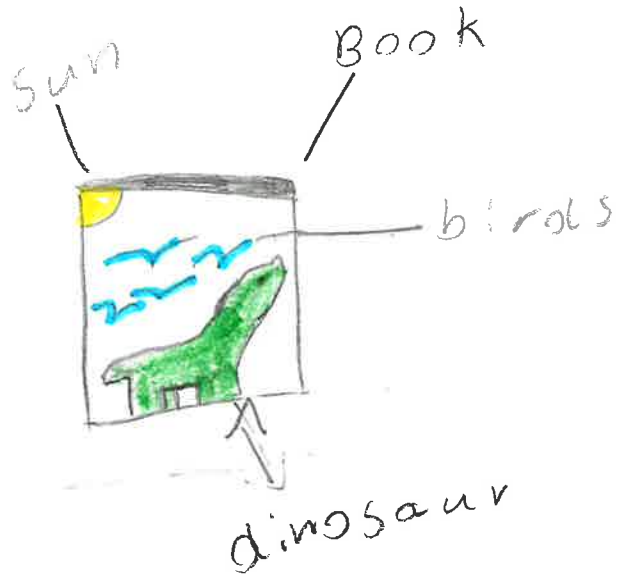
## Action NOW! Items

- Create a study zone for middle and high school students leading up to finals
- Add more allyship questions to 'tween book discussions
- Monthly 1:1s with PSS to improve communication and reduce middle management grey areas
- Work with WI DPI to explore statewide reentry programs with Dept. of Corrections
- Bring speaker ideas to future WLA conference planning teams
- Celebrate National Good Neighbor Day (Sept.)— Library Guide already requested, share w/city
- Discuss intergenerational programming with YS — e.g. BYOC expands to teach knitting for teens
- Join the Sustainable Libraries Initiative (talk to SUN)
- Share survey tools (Gallup, Energage, Denison) with HR and city admin
- Take trustee advocacy info to WLA team



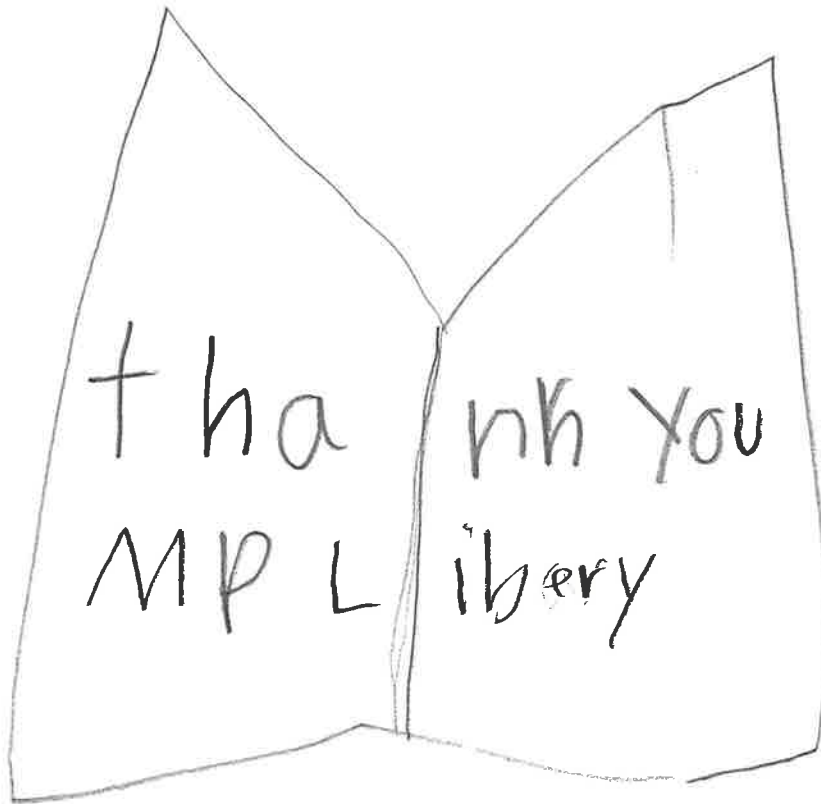


# Thank You!



Thank you middleton  
public library for  
letting us have girl  
scout meetings Love Nani +  
Kayla

# Thank You!



from troop 271

Thank you for working at

the library.